

## Description

The SmartEnergy 400A Energy Management Current Transformers easily clip onto the electrical wiring to send current information to a connected SEM-1024-00 SmartEnergy Monitor. Their split core design provides non-contact current measurements without having to disconnect the primary wire.

## Applications

When connected to the SEM-1024 SmartEnergy Monitor these transformers measure AC current moving through their magnetic field. This data is sent to SEM-1024 and displayed on UIs throughout the system.



### Feature Summary

- Split core design offers easier installation, portable.
- Suitable for harsh operating environments.
- Gather and store real-time and historical data for incoming feeds when connected to the SEM-1024 SmartEnergy Monitor.

## Included Items

| Description              | Quantity |
|--------------------------|----------|
| SEM-400A1-00 Transformer | 1        |

## Required System Components

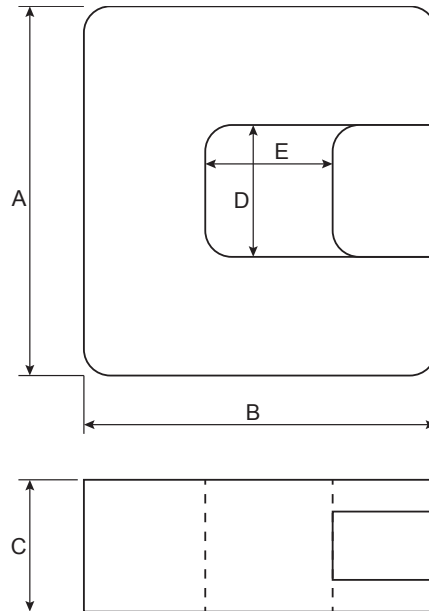
The following components are required to use SmartEnergy Energy Management Current Transformers.

| Description                 | Model Number                        |
|-----------------------------|-------------------------------------|
| Host Controller             | HST-xxxx or SVR-xxxx                |
| SmartEnergy Monitor Chassis | SEM-1024-00                         |
| Ethernet Network            | Enterprise-grade network deployment |

## Specifications

| Environmental               |   |
|-----------------------------|---|
| Rated Primary Input:        | 400A  |
| Secondary Output:           | 0.333 VAC at rated current.   |
| Accuracy:                   | ±1% from 10% to 130% of rated current.  |
| Phase Angle:                | less than 2 degrees at 50% of rated current.                                  |
| Operating Temperature:      | 15°C to +60°C   |
| Secondary Burden Impedance: | ≥ 100K Ω  |
| Lead Wire:                  | 8 Foot (2.4m) leads, AWM 1015, 0.34mm <sup>2</sup> (22AWG), 600V, WHITE/BLACK |

## Dimensions



| Part Number  | A               | B               | C             | D               | E               |
|--------------|-----------------|-----------------|---------------|-----------------|-----------------|
| SEM-400A1-00 | 3.25in (82.5mm) | 3.35in (85.1mm) | 1.06in (27mm) | 1.25in (31.8mm) | 1.25in (31.8mm) |

## Design Considerations

For details on the use of the SEM-400A1-00 current transformer within a system, refer to the following documents located on the Savant Portal: [dealers.savantsystems.com](http://dealers.savantsystems.com)

- 009-0521-xx SEM-1024 Tech Spec
- 009-0358-xx SmartEnergy Monitor (SEM-1024) Quick Reference Guide

## Other Models Available

The SmartEnergy current transformers are also available with the following amperage values:

| Model Number | Description                      |
|--------------|----------------------------------|
| SEM-020A5-00 | SmartEnergy 20A Sensor (5 Pack)  |
| SEM-050A5-00 | SmartEnergy 50A Sensor (5 Pack)  |
| SEM-150A1-00 | SmartEnergy 150A Sensor (1 Pack) |
| SEM-150A5-00 | SmartEnergy 150A Sensor (5 Pack) |
| SEM-250A1-00 | SmartEnergy 250A Sensor (1 Pack) |
| SEM-600A1-00 | SmartEnergy 600A Sensor (1 Pack) |