

# RS267TDRS

26 cu. ft. Side-by-Side Refrigerator

## Features

- Large Capacity – 26 cu. ft.
- External Filtered Water and Ice Dispenser
- LED Tower Lighting
- Twin Cooling System®
- Multi Air Flow
- Six Temperature Sensors
- Power Freeze and Power Cool Options
- CoolSelect Zone™ Drawer
- Tempered Glass Spill-Proof Shelves
- Gallon Door Bins

## Convenience

- Door Alarm
- Water Filter Indicator
- Wine Rack



ENERGY STAR® rated:  
Rated CEE Tier 3: Most Efficient  
502 kWh/yr



Side-by-Side Design



CoolSelect Zone™

## Available Colors



Stainless Steel  
(shown)



White



Black

## Signature Features

### COOLSELECT ZONE™ DRAWER

CoolSelect Zone™ provides additional temperature control for your food storage needs with Quick Cool, Thaw and Cool Mode options.

### TWIN COOLING SYSTEM®

- Two independent cooling systems perfectly balance air by keeping refrigerator air moist and freezer air dry.
- Higher humidity in the refrigerator means fruits and veggies stay fresher even longer.\*

\*Twin Cooling® humidity levels up to 5x higher than single cooling systems.

### LED TOWER LIGHTING

LED lighting emits less heat than conventional bulb lighting, affecting less damage to the temperature management.



**Ranked “Highest in Customer Satisfaction with Refrigerators”**  
by J.D. Power and Associates.

**SAMSUNG**

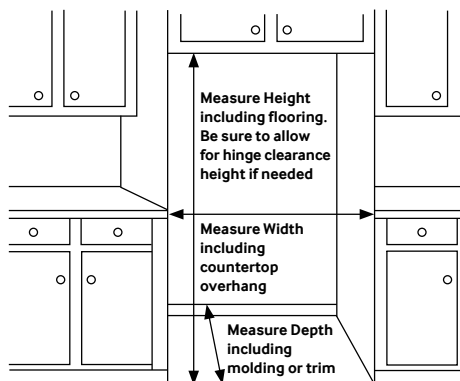
# RS267TDRS

## 26 cu. ft. Side-by-Side Refrigerator

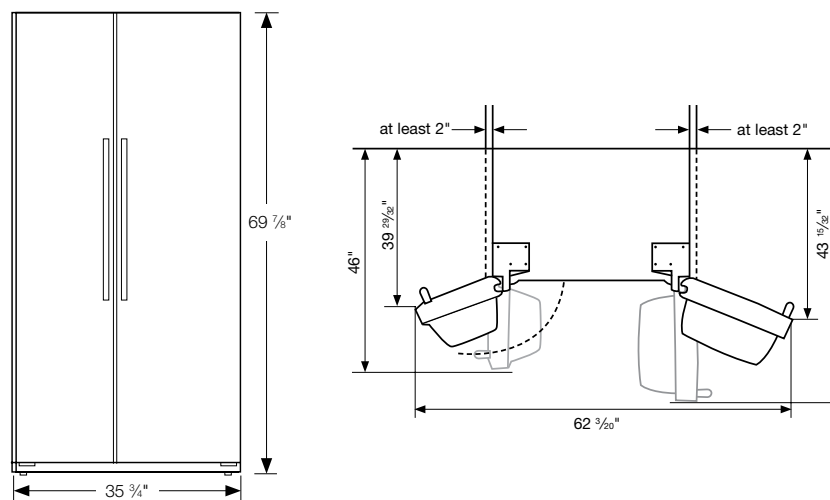
### Installing Your Refrigerator

1. Measure the height, width and depth of the opening, making sure to include baseboards, molding tile, countertop overhang, etc. Check to be sure there is enough room to open the door (consider walls, islands or other obstacles when measuring).
2. Refer to chart B below to determine dimensions.
3. Allow 2" of clearance on hinge side of refrigerator when installing next to a wall where handle may make contact.
4. Allow 1" minimum clearance at rear for proper air circulation and water/electrical connections. Allow a 3/8" minimum clearance at sides and top for ease of installation.
5. Ensure each door and entry way in the home is wide enough for the refrigerator to be moved through easily.

Please note: The following dimension and cutout information is for planning purposes only. For complete installation details consult manual packed with product, or download manual on-line at [samsung.com](http://samsung.com).



### Dimensions



### Total Capacity: 25.5 cu. ft.

#### Refrigerator: 15.8 cu. ft.

- Multi Air Flow
- CoolSelect Zone™
- 4 Tempered Glass Spill-Proof Shelves
- 2 Clear Crispers
- 1 Clear Drawer
- 5 Door Bins
  - 2 Gallon Bins
  - 2 Clear Bins
  - 1 Dairy Bin
- LED Tower Lighting

#### Freezer: 9.7 cu. ft.

- External Filtered Water and Ice Dispenser (Crushed or Cubed Ice)
- Automatic In-Door Ice Maker
- 4 Glass Shelves
- 3 Clear Tilting Door Bins
- 2 Clear Drawers
- LED Tower Lighting

### Accessories

Water Filter: HAF-CIN

### Warranty

One (1) Year All Parts and Labor

Five (5) Years Sealed System Parts and Labor

### Product Dimensions & Weight

Dimensions (WxHxD with hinges, handles and doors):  
35 3/4" x 69 7/8" x 35 3/4"

Dimensions (WxHxD without hinges and door):  
35 3/4" x 68 1/2" x 29 1/2"

Dimensions (WxHxD with hinge and door, no handle):  
35 3/4" x 69 7/8" x 33 7/8"

Weight: 295 lbs.

### Shipping Dimensions & Weight (WxHxD)

Dimensions: 38 1/4" x 75 3/4" x 36 1/4"

Weight: 322 lbs.

Color	Model #	UPC Code
Stainless Steel	RS267TDRS	036725569720
White	RS267TDWP	036725569751
Black	RS267TDBP	036725569744

**SAMSUNG**

Samsung received the highest numerical score for refrigerators in the proprietary J.D. Power and Associates 2012 Kitchen Appliance Study.<sup>SM</sup> Study based on 12,615 total responses measuring 17 brands and measures opinions of consumers about their refrigerator obtained new in the past 24 months. Proprietary study results are based on experiences and perceptions of consumers surveyed in January-February 2012. Your experiences may vary. Visit [jdpower.com](http://jdpower.com).

Actual color may vary. Design, specifications, and color availability are subject to change without notice.

Non-metric weights and measurements are approximate.

©2013 Samsung Electronics America, Inc. 85 Challenger Road, Ridgefield Park, NJ 07660. Tel: 800-SAMSUNG. [samsung.com](http://samsung.com).

Samsung is a registered trademark of Samsung Electronics Co. Ltd.