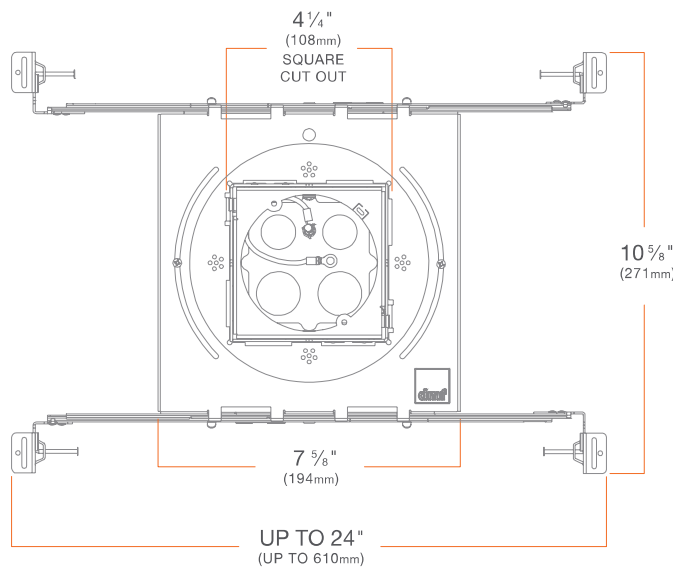
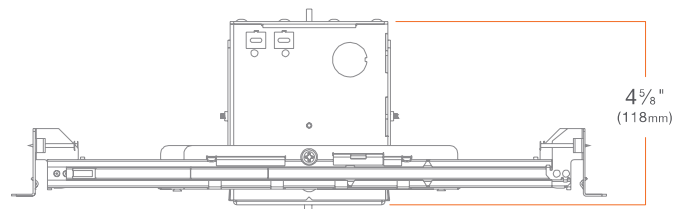
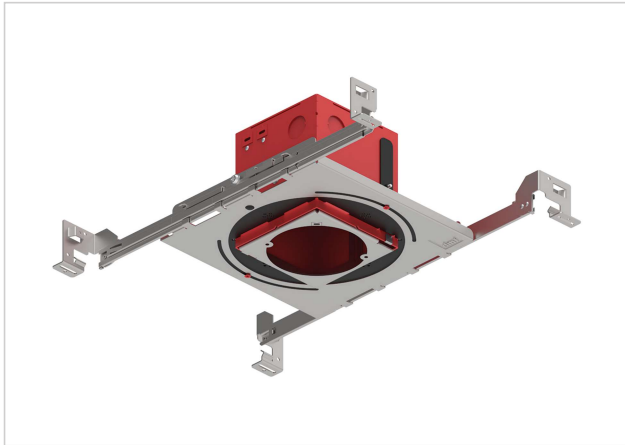


HOUSING



SquareFrame

New Construction

Deep Square Junction Box

DRDHNJS

SUMMARY

JUNCTION BOX: Equipped with (8) trade size knockouts (four (1/2") side, two (3/4") top, two (1/2") top) and (4) Romex knockouts (side) to allow straight conduit runs. Approved for 8 (four in, four out) #12 AWG 70°C.

MOUNTING: Pre-installed mounting brackets allow vertical adjustment of bar hangers up to 1".

CEILING: 1/2" up to 1 3/4"

CUTOUT: 4 1/4" (108mm) square opening

LISTINGS: Metallic outlet box certified UL514A, code compliant for use in appropriate fire-rated assemblies for up to 2-hours, STC/IIC Sound Rated, ASTM E283 certified Air Tight, IC (Insulation Contact) rated

WARRANTY: 5 year limited warranty