



AGArangeusa.com

eR7 100 CLASSIC CAST IRON

MODEL: AER7339

The AGA eR7 Classic Cast Iron Collection is powered by electricity and possesses the iconic good looks you've come to expect from an AGA range, but with everyday enhanced controllability providing the option to set the ovens to different temperatures. The cast-iron ovens cook using radiant heat, meaning food tastes better and all the flavor, moisture and goodness is locked in.

OVERVIEW

The AGA eR7 100 gives you everything you love about the classic AGA Cast Iron range, but with the ability to turn each cooking area on and off, and the added convenience of touchscreen control to select from a range of cooking temperatures.

The three ovens – for roasting, baking and simmering – and two hotplates on the AGA eR7 100 are controlled by a touch-screen panel. Hotplates and ovens can be individually controlled, and for optimal control, there are 5 heat settings for the roasting oven and 4 for the baking oven.

The cast-iron ovens also feature an Altrashell™ coating, which seals the cast-iron and makes them easier to clean. For further ease, the inner door liners can be removed and placed in a dishwasher.

RANGE DIMENSIONS

When surveying for a cooker installation the actual clearance required for the 'body' of the appliance should be increased by 3/8" (10mm) beyond the figures quoted above. This allows safe margin to take into account the natural dimensional variations found in major castings. In particular the width across the appliance recess could be critical.

A	B	C	D	E	F	G	H	J	K	L	M
58 1/8"	37 7/8"	35 1/8"	26 3/4"	54 1/8"	29 7/8"	45 1/8"	27 7/8"	4 1/8"	3/8"	38 3/4"	24 3/4"

SPECIFICATIONS

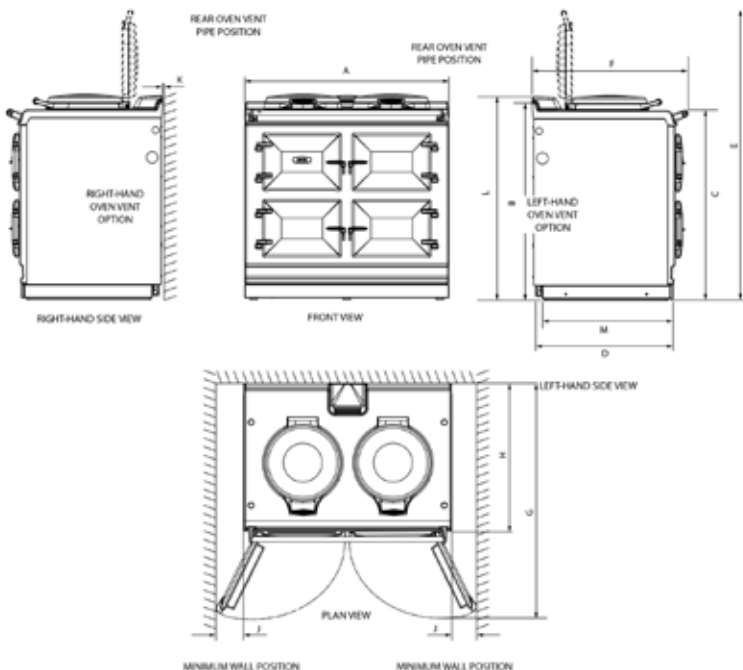
- Product Dimensions: 36 1/16" H x 38 7/8" W x 27 1/2" D (inches)
- Shipping weight (lbs): 816 lbs. (includes range, crate & pallet)

WARRANTY

- 1 Year Warranty for parts and labor, subsequent 4 years - parts only

FINISHES

The AGA Classic eR7 100 is available in 16 contemporary colors. (see next page)





AGArangeusa.com

eR7 100 CLASSIC CAST IRON

AGA eR7 COLOR FINISHES

The AGA Classic eR7 100 is available in 16 contemporary colors.



OLIVINE



AUBERGINE



BLACK



CREAM



DARK BLUE



DUCK EGG BLUE



PEWTER



WHITE



PEARL ASHES



SLATE



SALCOMBE BLUE



LINEN



DOVE



DARTMOUTH BLUE



BLUSH



BRITISH RACING GREEN

NOTE: Colors not in stock could have a 4-12 week lead time (check for availability)



AGArangeusa.com

eR7 100 CLASSIC CAST IRON

The AGA eR7 has the traditional cast iron ovens with independently controlled hotplates.



ROASTING OVEN

This high temperature power house is used for starting off many foods. The top of the oven is used to grill food, while the center is used for fast roasting meat and poultry. The floor of this oven is perfect for cooking pizzas and it is also a 'hidden hotplate', where pans may be placed to oven-fry foods such as steak.

BAKING OVEN

The baking oven is maintained at a moderate heat, making it perfect for baking all kinds of cakes and cookies. It is ideal for moderate roasting, cooking fish and deep or layered dishes such as lasagne.

SIMMERING OVEN

Once food has been brought to temperature somewhere else on the range, it can simply be transferred to this oven where it will be bathed with gentle radiant heat and finish cooking.

BOILING PLATE

The AGA boiling plate delivers a really fast punch of heat for quickly boiling water, maintaining a rolling boil and for fast stir-fries in a wok. Ridged griddle pans are also used here for authentic grilled steaks, chops and cutlets. Both hotplates will accommodate three good-sized saucepans at the same time – to adjust the rate of cooking, simply partially offset to the side of the hotplate once the pan has come to temperature.

SIMMERING PLATE

The cooler AGA hotplate is designed for slowly bringing foods to a gentle simmer. Use it for heating milk, scrambled eggs and for making sauces – even tricky emulsion sauces, such as Hollandaise and Bearnaise, become easy. Used as a griddle, it will also make feather-light crepes and delicious toasted sandwiches.



eR7 100 EXPANSION CONFIGURATIONS

Increase the capabilities of your AGA eR7 100



MODEL: **AER7560W**

AGA eR7 150 WITH WARMING PLATE HOTCUPBOARD — This configuration provides additional cooking space with a slow cook and warming oven, as well as a large warming plate atop the hotcupboard giving additional serving space for buffet styled meals.

- Product Dimensions: 36 1/16" H x 58 1/4" W x 27 1/2" D (inches)
- Shipping weight (lbs): 1058 lbs. *(includes range, crate & pallet)*



MODEL: **AER7560I**

AGA eR7 150 WITH INDUCTION HOTCUPBOARD — This configuration provides additional cooking space with a slow cook and warming oven as well as a large 12" H x 12" W single-zone induction cooking surface. The induction cook-top features touch-pad controls as well as a host of features including power boost, child safety lock, and 9 power settings.

- Product Dimensions: 36 1/16" H x 58 1/4" W x 27 1/2" D (inches)
- Shipping weight (lbs): 1058 lbs. *(includes range, crate & pallet)*



MODEL: **AER7563G**

AGA eR7 160 WITH DUAL FUEL MODULE — This configuration provides an additional conventional oven with electric broiler, convection oven with fan, and 4-top gas burners.

- Product Dimensions: 36 1/16" H x 62 9/16" W x 27 1/2" D (inches)
- Shipping weight (lbs): 1023 lbs. *(includes range, crate & pallet)*



MODEL: **AER7783WG**

AGA eR7 210 WITH HOTCUPBOARD & DUAL FUEL MODULE — This configuration provides ample cooking space with slow cook and warming ovens, a large warming plate atop one of the hotcupboards, as well as an additional conventional oven with electric broiler, convection oven with fan, and 4-top gas burners.

- Product Dimensions: 36 1/16" H x 82 1/16" W x 27 1/2" D (inches)
- Shipping weight (lbs): 1266 lbs. *(includes range, crate & pallet)*



MODEL: **AER7783IG**

AGA eR7 210 WITH INDUCTION AND DUAL FUEL MODULE — This configuration provides ample cooking space with slow cook and warming ovens, a large 12" H x 12" W single-zone induction cooking surface, as well as an additional conventional oven with electric broiler, convection oven with fan, and 4-top gas burners. The induction cooktop features touchpad controls as well as a host of features including power boost, child safety lock, and 9 power settings.

- Product Dimensions: 36 1/16" H x 80 11/16" W x 27 1/2" D (inches)
- Shipping weight (lbs): 1266 lbs. *(includes range, crate & pallet)*



AGArangeusa.com

eR7 100 CLASSIC CAST IRON



Get to know the AGA eR7 Series
by viewing an introductory
video featuring AGA Specialist
Penny Zako

<https://vimeo.com/438138720>



Specifications are subject to change without notice. Visit [agarangeusa.com](https://www.agarangeusa.com) for the most up-to-date information.