



# PROFESSIONAL COLLECTION

## Pendant Speakers



### Installation Manual

PP50B, PP60B, PP80, PPSUB8B, PBR68B  
PP50W, PP60W, PP80W, PPSUB8W, PBR68W

# Table of Contents

Introduction	1
Certifications & Safety Agency	1
What's Included	2
Specifications	2
Product Features	3
70v/100v System	4
Speaker Placement	5
Speaker Wire	6
Wire Routing	6
Installation	7
Troubleshooting	12
Technical Assistance	12
Warranty	13
Return Process	13



## Introduction

Thank you for purchasing the Professional Collection speaker. All of Origin Acoustics' speakers are designed to have excellent sound quality, longevity, and a simple installation process.

This instruction booklet covers the necessary information for a smooth installation, including: the tools you will need, step-by-step instructions for installation, troubleshooting tips for any errors that may occur, and all warranty information. If for any reason you experience problems or if you have installation questions please call us at (844) 674-4461. Hours of operation are 8:00am to 5:00pm (Pacific Time), Monday through Friday.

## Certifications

### SAFETY AGENCY COMPLIANCE

Origin Acoustics Professional Collection Pendant speakers models PP50, PP60, PP80, PPSUB8 meet the following standards:

UL 1480A: Standard for Speakers for Commercial and Professional Use

NFPA 70: The installation methods should be in accordance with the applicable section of the National Electrical Code, ANSI/NFPA 70. The wiring method and compartment should not interfere with the operation of the speaker.

Gripple® Suspension Kit included meets the following standard:

UL 2239: Standard for Safety Hardware for the Support of Conduit, Tubing, and Cable



# What's Included

- Speaker
- Grille Removal Key
- Gripple® Suspension Kit Containing:
  - Gripple Rope Grip (2)
  - Gripple Release Key
  - Hanging Cable (stainless steel)
  - Safety Cable (stainless steel)
- Cable Ties (3)
- Installation Manual

## SPECIFICATIONS

MODEL*	PP80B, PP80W	PP60B, PP60W	PP50B, PP50W
<b>PART</b>	<b>SPP80000B, SPP80000W</b>	<b>SPP60000B, SPP60000B</b>	<b>SPP50000B, SPP50000W</b>
<b>Woofers</b>	8" (203mm) Polypropylene	6½" (165mm) Polypropylene	5 ¼" (133mm) Polypropylene
<b>Tweeter</b>	1" (25mm) Silk DSPD™ MMP™	1" (25mm) Silk DSPD™ MMP™	1" (25mm) Silk DSPD™ MMP™
<b>Power Handling (Continuous Program Power)</b>	200 Watts	130 Watts	100 Watts
<b>Power Handling (Continuous Pink Noise)</b>	100 Watts	65 Watts	50 Watts
<b>Frequency Response (+/- 10dB)</b>	42Hz-20kHz	50Hz-20kHz	57Hz-20kHz
<b>Frequency Response (+/- 3dB)</b>	57Hz-20kHz	62Hz-20kHz	75Hz-20kHz
<b>Nominal Coverage Angle</b>	110 Degree Conical Coverage	120 Degree Conical Coverage	120 Degree Conical Coverage
<b>Rated Maximum SPL @1m</b>	110dB	108dB	105dB
<b>Rated Impedance</b>	8 Ohm nominal	8 Ohm nominal	8 Ohm nominal
<b>Transformer Taps</b>	70V - 60W, 30W, 15W, 7.5W 100V - 60W, 30W, 15W	70V - 60W, 30W, 15W, 7.5W 100V - 60W, 30W, 15W	70V - 30W, 15W, 7.5W, 3.75W 100V - 30W, 15W, 7.5W
<b>Diameter</b>	10" (254mm)	8 ¼" (210mm)	6 1/16" (170mm)
<b>Length</b>	16 ¼" (412mm)	12 5/16" (313mm)	10 ½" (267mm)
<b>Feature 1</b>	8" Passive Radiator	6 ½" Passive Radiator	5" Passive Radiator

MODEL*	PPSUB8B, PPSUB8W
<b>PART</b>	<b>SPPSUB80B, SPPSUB80W</b>
<b>Woofers</b>	8" (203mm) Polypropylene
<b>Power Handling (Continuous Program Power)</b>	200 Watts
<b>Power Handling (Continuous Pink Noise)</b>	125 Watts
<b>Frequency Response (+/- 10dB)</b>	40Hz-250Hz
<b>Frequency Response (+/- 3dB)</b>	55Hz-250Hz
<b>Nominal Coverage Angle</b>	180 Degree Conical Coverage
<b>Rated Maximum SPL @1m</b>	110dB
<b>Rated Impedance</b>	8 Ohm nominal
<b>Transformer Taps</b>	70V - 120W, 60W, 30W, 15W 100V - 120W, 60W, 30W
<b>Diameter</b>	10" (254mm)
<b>Length</b>	16 ¼" (412mm)
<b>Feature 1</b>	8" Passive Radiator

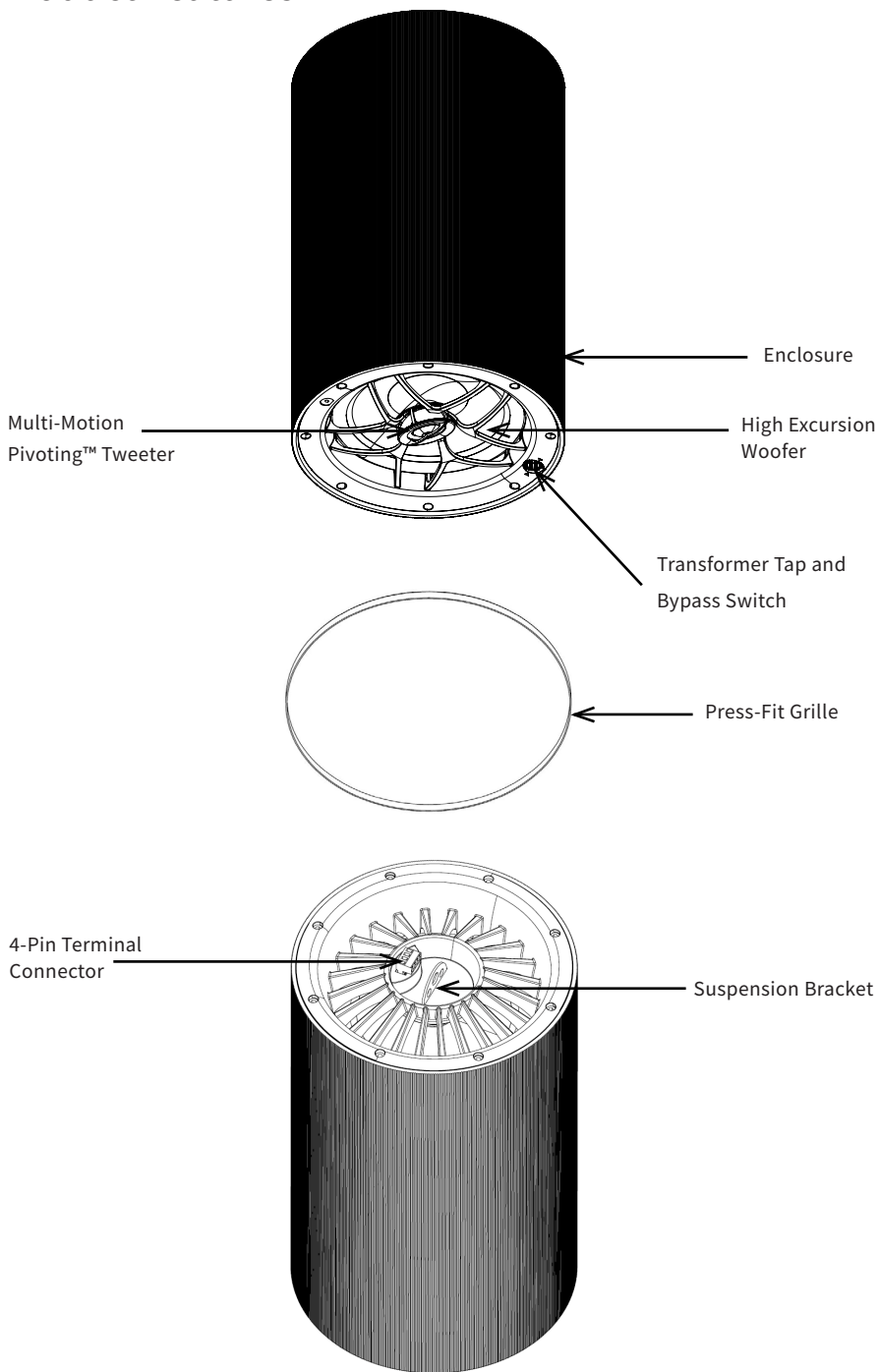
MODEL	PBR68B, PBR68W
<b>PART</b>	<b>PBR68000B, PBR68000W</b>
<b>Rated Impedance</b>	8 ohm nominal
<b>Transformer Taps</b>	70V - 60W, 30W, 15W, 7.5W 100V - 60W, 30W, 15W
<b>Diameter</b>	10" (254mm)
<b>Length</b>	13 ½" (342mm)

\* All models:

- Available in black and white colors.
- Gripple® Suspension Kit safe working load = 100lbs/45Kg Max

\*All product information is subject to change. Please refer to the dealer portal for the latest information.

# Product Features



## 70V/100V System

70/100-Volt systems are advantageous when the design calls for multiple speakers from the same amplifier and/or long-distance wire runs. The Origin Acoustics 70V/100V loudspeakers feature multiple taps off the transformer adjusted by a rotary switch at the front side of the speaker. The higher the wattage selected the more output will be generated by the speaker. Please note, 70V is common in the U.S. while 100V is the common voltage internationally, especially in Europe. A simple calculation is used to determine how many speakers can be driven on a single amplifier channel. First, for safety purposes, it is recommended to make the calculations based on 80% of the amplifiers rated power. For example, a 500-watt amplifier would safely deliver 400 watts of usable power ( $500 \times 0.8 = 400$ ). Now it is simply a matter of dividing 400 by the tap setting of the speakers. For example, if the speakers are set at a 15W tap, the amplifier would be capable of driving 26 speakers per channel. At a 30W tap that would be 13 speakers. At a 60W tap that would be 6 speakers and so on.

As you can see, if you need coverage over a wide area and it requires numerous speakers, a 70V/100V system presents a tremendous advantage. However, it should be noted that the higher the wattage tap the higher the fidelity and the greater SPL that can be delivered from each speaker. Therefore, it is best to determine the total number of speakers needed and set the taps as high as possible within the amplifier's power output rating. As mentioned, the rotary switch used to adjust the tap setting is located at the front side of the speaker. It is best to leave the grilles off until all of the tap settings have been properly adjusted.

The table below lists the power tap settings for each model. These same settings are reflected on the rotary switch on the front side of speaker. Note that there is an  $8\Omega$  setting for both voltages that bypasses the transformer entirely. Use caution to avoid this setting when connected to a 70V/100V amplifier as this can destroy the loudspeaker.

The tap setting determines how much wattage each speaker will draw from the amplifier. When daisy-chaining multiple speakers, add the combined wattages of all tap settings to determine the wattage draw on the amplifier. The combined total wattage should never exceed the wattage rating of the amplifier.

Model	Position	1	2	3	4	5
PP80 PP60	70V	-	60W	30W	15W	7.5W
	100V	-	-	60W	30W	15W
	8ohm	8 $\Omega$	-	-	-	-
PP50	70V	-	30W	15W	7.5W	3.75W
	100V	-	-	30W	15W	7.5W
	8ohm	8 $\Omega$	-	-	-	-
PPSUB8	70V	-	120W	60W	30W	15W
	100V	-	-	120W	60W	30W
	8ohm	8 $\Omega$	-	-	-	-
PBR68	70V	-	60W	30W	15W	7.5W
	100V	-	-	60W	30W	15W
	8ohm	8 $\Omega$	-	-	-	-

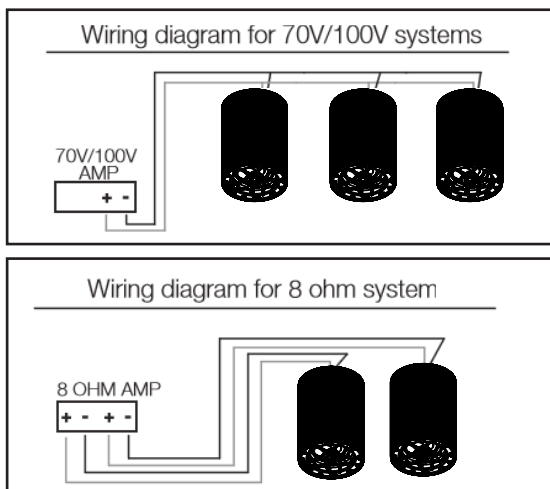
Tap Switch for PP60 & PP80



**WARNING:** The  $8\Omega$  position cannot be used with a 70/100V connection as it will damage or destroy the transformer.

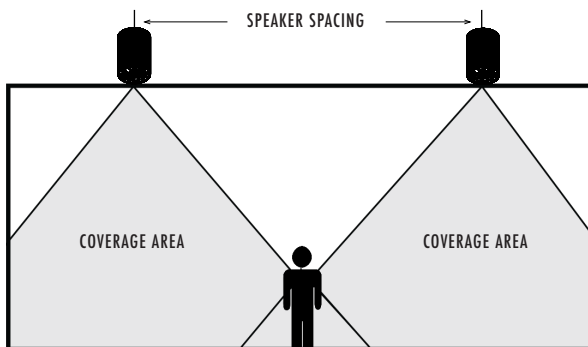
Should you be uncomfortable designing or installing a 70/100V system, or should you have any questions please contact Origin Acoustics Technical Support.

## Wiring Diagram



## Speaker Placement

Speaker placement is determined by several factors like desired SPL, coverage requirements, variance in SPL by location, etc. When the object is to fill a large area with very little variance (+/- 2dB), then a larger number of speakers is required. Typically, once the number of speakers has been determined, placing them equidistant from the walls and from each other will deliver the best result. However, due to other factors this may not be possible. Also realize that the higher the ceiling the greater the conical dispersion and therefore the larger coverage area per speaker. The further the speaker is from the listener, the lower the SPL. As the speaker is placed closer to the wall, bass frequencies will be enhanced. This may or may not be the desired effect but certainly needs to be considered.



Speaker Spacing for a Distributed Audio System		
	Standing Listener	Seated Listener
8' Hanging Height	6' (1.8m) Apart	10' (3m) Apart
10' Hanging Height	10' (3m) Apart	14' (4.3m) Apart
12' Hanging Height	44' (4.3m) Apart	18' (5.5m) Apart
14' Hanging Height	18' (5.5m) Apart	22' (6.7m) Apart

## Speaker Wire

The gauge of wire used can have an impact on the performance of your speakers. Generally, speaker wire is determined by the length of the run and wattage utilized. The longer your run is, the smaller the wire gauge must be.

On commercial 70 volt systems, 18 gauge, 2 conductor, stranded and jacketed without shield wire is commonly used.

Wire Length	Wire Gauge	System
0 -200' (0 - 60m)	18	70V / 100V
200-500' (60 -150m)	16	70V / 100V
Over 500' (150m)	14	70V / 100V

In residential systems, for relatively short runs (less than 50 feet) to 8 ohm speakers, 16 gauge wire will be usually suitable.

Wire Length	Wire Gauge	System
0 - 50' (0 - 15m)	16	8 Ohm
50 - 100' (15 - 45m)	14	8 Ohm
Over 100' (30m)	12	8 Ohm

## Wire Routing

Plan how you'll route the wire to the desired speaker location. There are several methods for routing the wire, and you may need to combine several of them.

### Behind the Baseboard

The wire can be routed behind the baseboard by cutting a groove out of the back of the baseboard, or by buying special baseboard designed for concealing wires.

### Attic or Basement

When available, you can route the wire through an attic or crawlspace.

### For New Construction

If these speakers are being installed in a new home during construction, the installation process will be a bit different (although much simpler). For these situations, it's recommended you purchase a bracket. Instructions on how to install the speakers are provided with the bracket, or can be found on our website. Visit [www.originacoustics.com](http://www.originacoustics.com) for more information.

### Through Walls

When running wires through a wall, be sure to avoid all obstacles such as AC wiring, pipes, and ducts.

### Under the Carpet

One option is to lift up the carpet and route "tape wire" under the carpet.



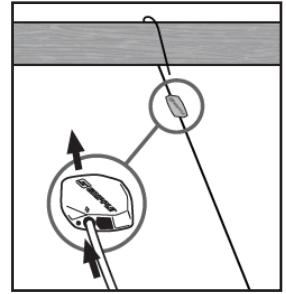
# Installation

## CAUTION: INSTALLATION MUST BE DONE BY QUALIFIED PERSONNEL.

Failure to comply with these usage recommendations may result in product malfunction and possible damage to property or bodily injury.

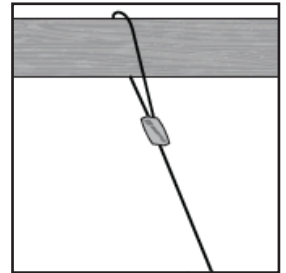
1. Insert hanging cable into the Gripple Rope Grip. Pass cable over ceiling anchor point (as shown) or through other secure anchor point of the building structure. Installer is responsible for secured anchoring. (See Figure A)

Figure A



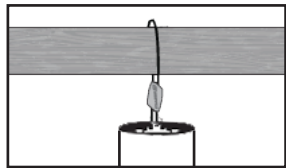
2. Pass the returning cable through other hole in the Gripple. (See Figure B)

Figure B



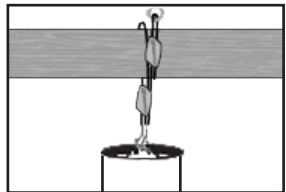
3. Latch the suspension hook onto the center hole in the top bracket of the speaker. Adjust to proper height by pulling cable through either end of Gripple. (See Figure C)

Figure C



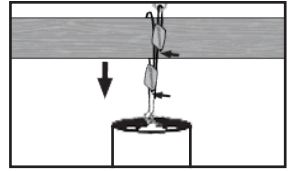
4. Latch secondary safety cable hook onto one of the side holes in the top bracket of the speaker, and loop the cable around a different ceiling support point of the building structure, per Steps 1 & 2. (See Figure D)

Figure D



5. After height adjustment is final, trim any unneeded extra cable tail wires with trimmer. (See Figure E)

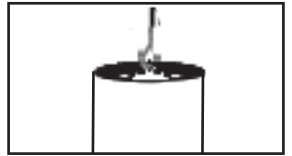
Figure E



### How To Use Release Key To Adjust Height Of Speaker

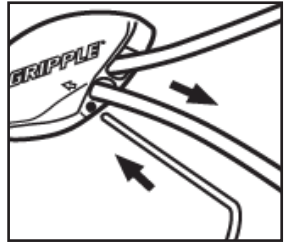
6. Make sure the weight of the load is supported. (See Figure F)

Figure F



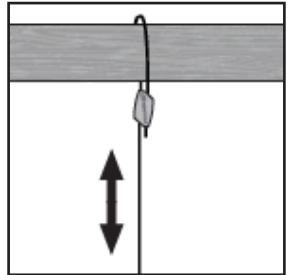
7. Insert Release key into small hole at bottom of Gripple. Push in 1/4" to release the cable. (See Figure G)

Figure G



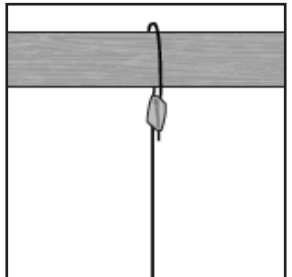
8. Adjust height. (See Figure H)

Figure H



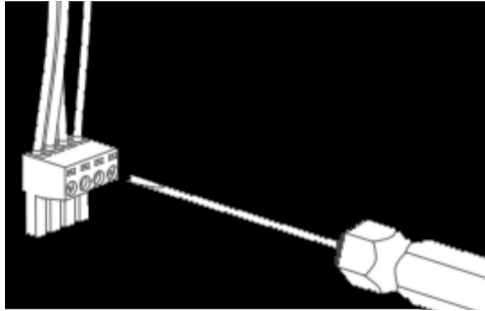
9. Remove key and re-secure the load. (See Figure I)

Figure I



10. Connect the wires from your amplifier to the Euroblock terminal connector. Strip approximately 3/16" (5mm) of the insulation off each wire. Insert the wire into the correct square opening on the connector. Use a small flat head screwdriver to tighten the corresponding screw to secure the wire. (See Figure J).

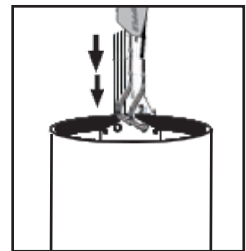
Figure J



11. Plug the male connector into the terminal connector at the rear speaker.

(See Figure K)

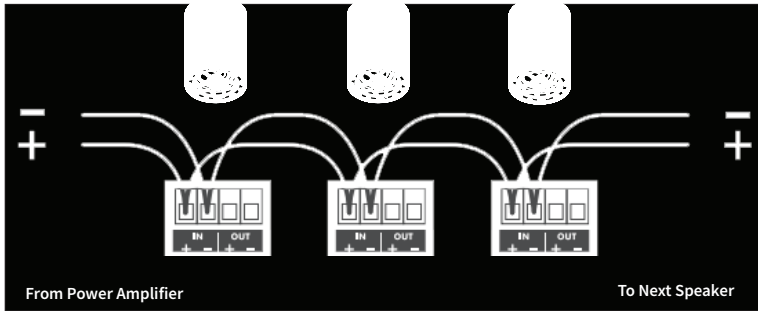
Figure K



12. When using multiple speakers you can connect the speakers either in parallel or in the loop through method as shown below (See Figure L & M).

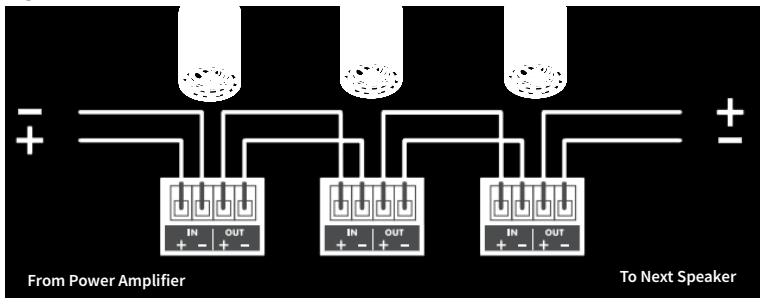
*Loop Through Connection*

Figure L



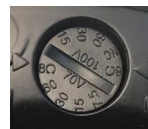
*Parallel Connection*

Figure M



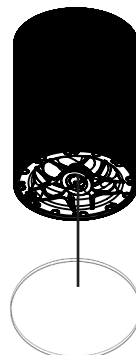
13. Determine the proper wattage setting for each speaker in the installation and set each speaker's transformer tap selector on the front of the speaker accordingly (See Figure N).

Figure N



14. Fit the grille onto the speaker. (See Figure O)

Figure O



# NOTES

## Troubleshooting

If you have a problem, try isolating it first. For example, if you're playing a DVD and there is no sound, try replacing the DVD with another audio source to see if you get sound. If it does work, then the problem is with the television, DVD player, or the cables connecting them. If it doesn't work, the problem will be with the amplifier, speakers, or those cables.

<b>Problem</b>	<b>Possible Cause</b>
<b>No Sound</b>	The volume may be turned down or muted. Check the volume settings on both the amplifier and the television/computer/CD player/etc.
<b>No Sound</b>	Make sure the proper source is selected on the amplifier or receiver.
<b>No Sound</b>	Check the cord connecting the amplifier with the source. The cord may be damaged or plugged into the wrong input or output.
<b>No Sound</b>	Check the wires connecting the amplifier with the speakers. Make sure they're connected properly and not damaged in any way.
<b>Poor Sound Quality</b>	If you hear something like static, or the sound is cutting in and out, check the audio cables. If the problem increases when a cable is being moved, then the cable is most likely faulty or not connected properly.
<b>Poor Sound Quality</b>	Today's audio systems may have several places to adjust the volume, for example your MP3 player may have a volume control, and your amplifier may also have one. Check to be certain that the volume isn't turned up past 80% on any device.
<b>Poor Sound Quality</b>	Try changing sources to be certain that the selection you've chosen is a good quality recording.

## Technical Assistance

If you have any questions or concerns about installing or using this product, you can reach us through one of the following methods:

**Phone: (844) 674-4461**

**Hours of operation: 8:00am - 5:00pm (Pacific Time), Mon - Fri**

**Email: [techsupport@originacoustics.com](mailto:techsupport@originacoustics.com)**

If you are having technical trouble, please include the model number and briefly explain what steps you took to resolve the problem in your email, or be prepared to answer these questions over the phone. If you are considering returning the product, it's required that you contact Origin Acoustics prior to any return attempts. This way we can determine if the issue can be resolved without returning the product, or if needed we can provide instructions and support for the return process.

## Limited 5-Year Warranty

Origin Acoustics warrants to the original retail purchaser only that this Origin Acoustics product will be free from defects in materials and workmanship, provided the speaker was purchased from an Origin Acoustics authorized dealer.

If the product is determined to be defective, it will be repaired or replaced at Origin Acoustics' discretion. If the product must be replaced yet it is no longer manufactured, it will be replaced with a model of equal to or greater value that is the most similar to the original. If this is the case, installing the replacement model may require mounting modifications; Origin Acoustics will not be responsible for any such related costs.

## Requirements & Warranty Coverage

This warranty may not be valid if the product was purchased through an unauthorized dealer. This warranty only applies to the individual that made the original purchase, and it cannot be applied to other purchases. The purchaser must be prepared to provide proof of purchase (receipt). This warranty will not be valid if the identifying number or serial number has been removed, defaced, or altered.

## Not Covered by Warranty

- Accidental damage
- Damage caused by abuse or misuse
- Damage caused by attempted repairs/modifications by anyone other than Origin Acoustics or an authorized dealer
- Damage caused by improper installation
- Normal wear, maintenance, and environmental issues
- Damage caused by voltage inputs in excess of the rated maximum of the unit
- Damage inflicted during the return shipment

**All warranties and warranty conditions are subject to change. Please refer to the dealer portal for the latest information.**

## Return Process

Before making any return attempts, it is required that you first contact Origin Acoustics. Return product to Origin Acoustics or your dealer, either in person or by mail. It's preferable if the product is returned in the original packaging. If this isn't possible, the customer is responsible for insuring the shipment for the full value of the product. This warranty is in lieu of all other expressed or implied warranties. Some states do not allow limitations on implied warranties, so this may not apply depending on the customer's location. (For more information, see Magnuson-Moss Warranty Act.)



6975 S Decatur Blvd, Las Vegas, NV 89118 • [www.originacoustics.com](http://www.originacoustics.com) • 844-674-4461

©2019 Origin Acoustics. All copyrighted, trademarked and patented elements mentioned herein are the sole property of Origin Acoustics.