



SIMPLE MANUAL

Sound Bar

Please read this manual carefully before operating your set and retain it for future reference.

To view the instructions of advanced features, visit <http://www.lg.com> and then download Owner's Manual.

Some of the content in this manual may differ from your unit.

MODEL
SK1



www.lg.com

Copyright © 2018 LG Electronics Inc. All Rights Reserved.

ENGLISH

WARNING: This product contains chemicals known to the State of California to cause cancer and birth defects or other reproductive harm. ***Wash hands after handling.***

FCC Compliance Statement

This equipment has been tested and found to comply with the limits for a Class B digital device, pursuant to Part 15 of the FCC Rules. These limits are designed to provide reasonable protection against harmful interference in a residential installation. This equipment generates, uses, and can radiate radio frequency energy and, if not installed and used in accordance with the instructions, may cause harmful interference to radio communications. However, there is no guarantee that interference will not occur in a particular installation. If this equipment does cause harmful interference to radio or television reception, which can be determined by turning the equipment off and on, the user is encouraged to try to correct the interference by one or more of the following measures:

- Reorient or relocate the receiving antenna.
- Increase the separation between the equipment and the receiver.
- Connect the equipment to an outlet on a circuit different from that to which the receiver is connected.
- Consult the dealer or an experienced radio/TV technician for help.

This device complies with part 15 of the FCC Rules. Operation is subject to the following two conditions:
(1) this device may not cause harmful interference and
(2) this device must accept any interference received, including interference that may cause undesired operation. Any changes or modifications in construction of this device which are not expressly approved by the party responsible for compliance could void the user's authority to operate the equipment.

FCC RF Radiation Exposure Statement: This equipment complies with FCC radiation exposure limits set forth for an uncontrolled environment. This transmitter must not be co-located or operating in conjunction with any other antenna or transmitter.

This equipment should be installed and operated with minimum distance 20 cm (7.8 inches) between the antenna and your body. Users must follow the specific operating instructions for satisfying RF exposure compliance.

Responsible Party:

LG Electronics USA, Inc.
1000 Sylvan Avenue
Englewood Cliffs, NJ 07632
Tel: 1-800-243-0000



LG Customer Information Center

1-800-243-0000	USA, Consumer
1-888-865-3026	USA, Commercial

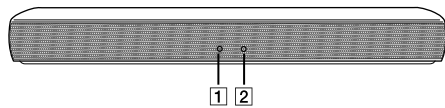
Register your product Online!

www.lg.com

Printed in China



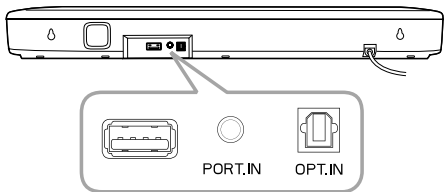
Front Panel



- 1 State LED**
- White (Staying on): Optical function is selected.
 - White (Blinking twice and staying on): LG Sound Sync (Optical) function is selected.
 - Green (Staying on): Portable function is selected.
 - Red (Staying on): Standby mode without network connection.
- 2 Bluetooth LED**
- Blue (Blinking): Waiting for **Bluetooth** connection.
 - Blue (Staying on): Paired with **Bluetooth** device.

! This unit operates only with the remote control.

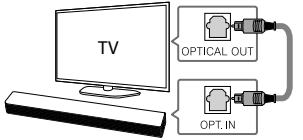
Rear Panel



USB (Service only) S/W download connector.
PORT. IN (Portable) Connect to a portable device.
OPT. IN (Optical) Connect to an optical device.

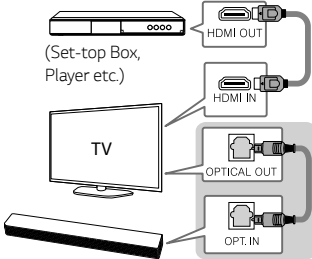
TV Connection

- 1 Connect the sound bar to the TV using Optical cable.
- 2 Set up [External Speaker (Optical)] on your TV setting menu.



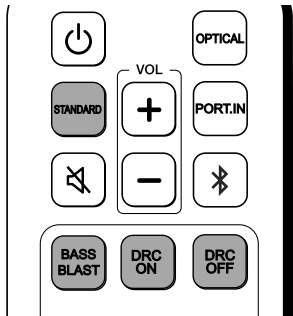
Additional Device Connection

- 1 Connect to the external device as follows.



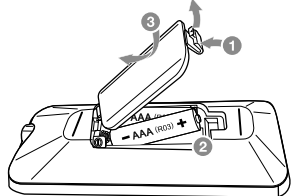
- 2 Set the input source by pressing **OPTICAL** on the remote control.

Remote control



STANDARD/BASS BLAST : Selects the sound effect.
DRC ON/OFF : Dynamic Range Control optimizes the volume level of compatible Dolby Digital content.

Replacement of battery



Additional Information

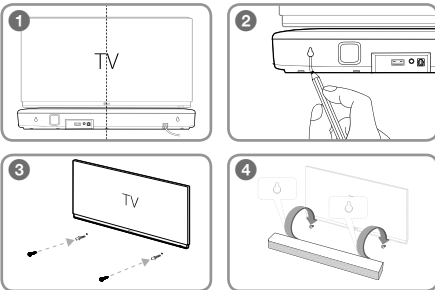
Specification

Power requirements	Refer to the main label.
Power consumption	Refer to the main label.
Dimensions (W x H x D)	Approx. 650.0 mm x 79.0 mm x 94.0 mm With foot (25.6 inch x 3.1 inch x 3.7 inch)
Amplifier (Total RMS Output power)	40 W RMS

Design and specifications are subject to change without notice.

Wall mounting (Optional)

You can mount the main unit on a wall by using holes on the rear of the unit. For details, download the online owner's manual. <http://www.lg.com>



BUY :

